



# User guide

ReSound Remote Control

**GN** Making Life Sound Better

# Contents

---

Your remote control .....	3
How to use your remote control .....	6
How to replace the battery .....	12
Cleaning and maintenance .....	17
Troubleshooting .....	18
Warnings .....	19
Regulatory information .....	22

# Your remote control

## Introduction

Thank you for choosing our products. We hope this remote control will make it easier and more pleasant for you to use your hearing aids.

This user guide only contains instructions on how to use the remote control. For information on how to use your hearing aids, consult the user guide for your hearing aids.

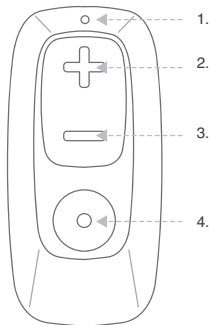
## Intended use

Your remote control is intended to let the user control a wireless hearing aid remotely.

# Your remote control

Seen from the front:

1. Button press indicator
2. Volume up button
3. Volume down button
4. Program selection button

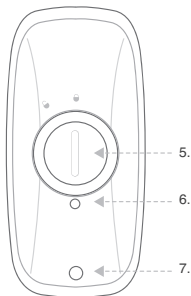


## Seen from behind:

5. Battery compartment
6. Pinhole button for pairing
7. Hole for key ring



**NOTE:** The small padlock symbols help you ensure that the battery compartment cover is safely closed.



# How to use your remote control

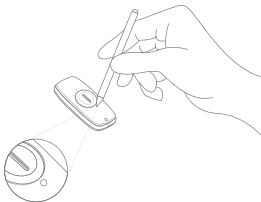
## How to pair your remote control with your hearing aids

Before you can start using your remote control, you need to pair it with your hearing aids. Just follow this simple procedure:



**NOTE:** Your hearing care professional may have paired the remote control for you.

1. Press the pin hole button on the back of the remote control using a pointy object. After pressing the pinhole button, your remote control will remain in pairing mode for 20 seconds.



2. Turn your hearing aids off and then on again, and keep them close to the remote control.
3. Once the pairing is done, you will hear a sound indicator on your hearing aids.
4. Your remote control is now ready for use.



**WARNING:** Contact your hearing care professional if you experience skin irritation while using your remote control.



**NOTE:** Only connect the remote control to connections for which it is explicitly intended.

## Visual indicators

The button press indicator on your remote control will light up every time you press the volume or program button.

When the remote control is in pairing mode, the button press indicator will blink every two seconds.

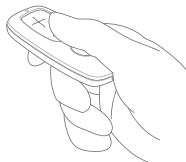
# How to adjust the volume in your hearing aids

Your hearing aids adjust the sound automatically, but sometimes you may want to adjust it manually. If this is the case, follow these simple steps:

1. Press the upper part of the volume control (+) to increase the volume.



2. Press the lower part of the volume control (-) to reduce the volume.



**NOTE:** Your hearing aids will return to your default volume setting when you turn them off and on again, or if you change program.





**NOTE:** You can also mute your hearing aids by pushing the volume down button (-) for more than one second. To unmute again, simply press any button.

## How to change program in your hearing aids

1. Press the program button to change program.



**NOTE:** Your hearing aids will return to your default listening program when you turn them off and on again.



## How to start streaming sound to your hearing aids

You can also stream sound directly to your hearing aids if your hearing care professional has made a streaming program available for you. To activate your streaming program:

1. Press the program button and keep it pressed for at least one second or until you hear a sound indicator. Your hearing aids will now start streaming sound from your wireless accessory.



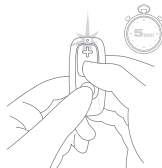
2. To return to the listening program you were using before, just tap the program button.



## How to lock your remote control

You can lock your remote control to avoid unwanted operation e.g. while carrying it in your pocket.

1. Press the program and volume down (-) buttons at the same time, and keep them pressed for five seconds. The button press indicator on top of the remote control will flash three times.
2. To unlock your remote control, repeat step one. When unlocking, the button press indicator will only flash once.



**NOTE:** The button press indicator will flash three times every time you press any button on the remote while it is locked, but there will be no change in volume level or program choice.

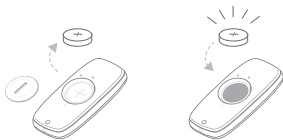
# How to replace the battery

## The battery

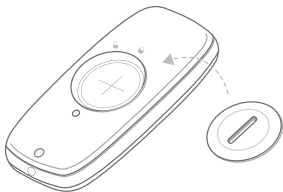
Use a **button cell CR2032** battery for your remote control.

## How to replace the battery

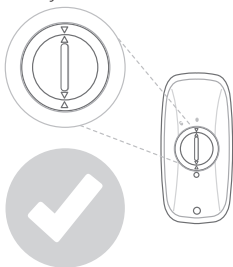
1. Open the battery compartment using a coin.
2. Place the battery as shown in the illustration. Make sure that the + sign faces upwards.



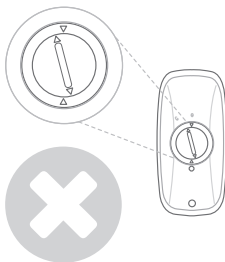
3. Replace the battery compartment cover. Your remote control is now ready for use.



Look at the arrows to see if your battery compartment is safely closed:



This battery compartment is **NOT** safely closed - see the arrows:



**NOTE:** Always use new batteries recommended to you by your hearing care professional.



**NOTE:** When you close the battery compartment cover, make sure that the coin slit points towards the locked padlock sign, and that the battery compartment cover is

flush with the rest of the housing- otherwise it will not be safely closed.

## Battery warnings

Your remote control is powered by a button cell battery. Read this safety information carefully before you start using your remote control:

1. Batteries can be dangerous for your health if they are swallowed:
  - Never put batteries in your mouth, because Lithium-Ion batteries can cause chemical burns.
  - Keep used and new batteries away from children, mentally disabled people and pets.
2. **If you suspect that a battery has been swallowed, contact a doctor or hospital immediately. If swallowed, this type of battery can cause severe internal burns in as little as two hours, which can be fatal.**

3. Batteries can leak – therefore you must remove the battery from the remote control if you are not going to use it for a long time.
4. Batteries are harmful for the environment. Therefore, never try to burn them – dispose of your used batteries according to your country's regulations or return them to your hearing care professional.
5. Keep the battery compartment cover away from children, mentally disabled people and pets, as it can be dangerous if they swallow it.
6. If you cannot close the battery compartment safely and securely, stop using the remote control and keep it away from children and pets.
7. Never recharge Lithium-Ion batteries, as they can leak or explode.



# Cleaning and maintenance

## How to clean your remote control

1. Clean the remote control using a dry cloth. Never use household cleaning products (detergent, soap, etc.), or alcohol to clean the device.
2. Always keep your remote control over a soft surface when cleaning it and changing batteries. This way you can avoid dropping it on the floor.
3. Protect your remote control from excessive moisture (bathing, swimming) and heat (radiator, car dashboard).
4. Protect the remote control against excessive shock and vibration.



**WARNING:** Never use water or any other liquid to clean your remote control, as this can damage it.



**NOTE:** Consult your hearing care professional if you need information on how to dispose of your remote control.

# Troubleshooting

Problem	Possible cause	Solution
Button press indicator does not light up when pressing any button	<ol style="list-style-type: none"><li>1. The battery is depleted</li><li>2. The battery is not placed correctly</li></ol>	<ol style="list-style-type: none"><li>1. Change the battery</li><li>2. Place it correctly</li></ol>
Button press indicator lights up when pressing any button but there is no volume adjustment or program change	The remote control is out of range, e.g. in your pocket	Move the remote control closer to you

# Warnings

## General warnings

1. Never expose your remote control to extreme heat or high humidity.
2. Do not use your remote control while driving.
3. Do not use in areas where there are explosive hazards or where there is a danger of ignition of flammable gasses.
4. X-ray radiation (e.g. CT scans, MRI scans) may adversely affect the correct functioning of this device. We recommend that you switch the device OFF before undergoing X-ray procedures and keep it outside the room.
5. Keep this remote control away from children under 3 years.
6. Keep your remote control away from operating machinery.
7. If the product overheats, if the product has been dropped or damaged, if the product has a damaged cord or plug, or if the product has been dropped in a liquid, discontinue use and contact your hearing care professional.

8. Avoid exposing your product to rain, moisture or other liquids to protect against damage to the product or injury to you.
9. Your remote control uses low-powered digitally coded transmissions in order to communicate with other wireless devices. Although unlikely, nearby electronic devices may be affected. In that case, move the remote control away from the affected electronic device.
10. The remote control may be interfered with by other equipment. When using your remote control, and it is affected by electromagnetic interference, move away from the source.



## **General precautions**

1. When boarding a flight or entering an area where RF transmitters are prohibited, deactivate wireless functionality. See your hearing aids' user guide for information on how to set your hearing aids in flight mode, because this will deactivate wireless transmission in both hearing aids and remote control.

2. If the hearing aids do not respond to the device because of an unusual field disturbance, move away from the disturbing field.
3. Do not use this device in locations where it is forbidden to use electronic devices.
4. Your hearing aids and this device were given a unique communication code during the fitting. This ensures that the device will not affect hearing aids worn by others.
5. High-powered electronic equipment, larger electronic installations and metallic structures may significantly reduce the operating range.
6. Opening or modifying the remote control might damage it. If problems occur which cannot be resolved by following the remedy guidelines in the troubleshooting section of this user guide, consult your hearing care professional.
7. The remote control may only be repaired by an authorized service center.

# Regulatory information

## Information on temperature, transport and storage

Your remote control is subject to various tests in temperature and damp heating cycling between -25°C and +60°C according to internal and industry standards.

## Warranty

Your remote control is covered by a limited warranty issued by the manufacturer for a period of 12 months from the day of the original purchase. Please notice that extended warranties may apply in your country. Please contact your local hearing care professional for more information.

### What is covered by the warranty:

Any electrical component, that because of workmanship, manufacturing or design defects fails to function properly under normal use during life of this warranty will be replaced or

repaired at no charge for parts or labor when returned to the point of purchase.

If it is determined that repair is not feasible, the entire unit may be replaced with an equivalent unit upon mutual agreement of the hearing care professional and the customer.

### What is not covered by this warranty:

Problems arising from improper handling or care, excessive use, accidents, repairs made by an unauthorized party, exposure to corrosive conditions or damage due to foreign objects entering the device are NOT covered by the limited warranty and may void it. The above warranty does not affect any legal rights that you might have under applicable national legislation governing sale of consumer products. Your hearing care professional may have issued a warranty that goes beyond the clauses of this limited warranty. Consult your hearing care professional for further information.



**NOTE:** This device operates in the frequency range of 2.4 GHz – 2.48 GHz. This device includes a RF transmitter that operates in the range of 2.4 GHz – 2.48 GHz.

## US and Canada

Model: RC-3: FCC ID: **X26RC-3** , IC: **6941C-RC3**

This device complies with Part 15 of the FCC Rules and ISSED Rules. In US: FCC CFR 47 Part 15, subpart C.

Operation is subject to the following two conditions: (1) this device may not cause harmful interference, and (2) this device must accept any interference received, including interference that may cause undesired operation.

Note: This equipment has been tested and found to comply with the limits for a Class B digital device, pursuant to Part 15 of the FCC Rules and ISSED Rules. These limits are designed to provide reasonable protection against harmful interference in a residential installation. This equipment generates, uses and can radiate radio frequency energy and, if not installed and used in accordance with the instructions, may cause harmful interference to radio communications. However, there is no guarantee that interference will not occur in a particular installation. If this equipment does cause harmful interference to radio or television reception, which can be determined by



turning the equipment off and on, the user is encouraged to try to correct the interference by one or more of the following measures:

- Reorient or relocate the receiving antenna.
- Increase the separation between the equipment and the receiver.
- Connect the equipment into an outlet on a circuit different from that to which the receiver is connected.
- Consult the dealer or an experienced radio/TV technician for help.

Changes or modifications can void the user's authority to operate the equipment.

## Symbols

Be aware of information marked with the warning symbol:



WARNING points out a situation that could lead to serious injuries.



CAUTION indicates a situation that could lead to minor and moderate injuries.



Advice and tips on how to handle your hearing aid better.



Equipment includes an RF transmitter.



Follow instructions for use.



Please ask your local hearing care professional concerning disposal of your hearing aids and accessories.

**NOTE:** Country-specific regulations may apply.



Product is a Type B applied part.



Complies with  
IMDA Standards  
DA108167

## Technical specifications

<b>Operating range:</b>	Up to 3 meters
<b>Wireless technology:</b>	2.4 GHz
<b>Operating temperature:</b>	0-55° C
<b>Nominal RF output power transmitted:</b>	4 dBm

© 2019 GN Hearing A/S. All rights reserved. ReSound is a trademark of GN Hearing A/S.

Manufacturer according to  
Health Canada:

**GN Hearing A/S**

Lautrupbjerg 7  
DK-2750 Ballerup  
Denmark  
Tel. +45 4575 1111  
[resound.com](http://resound.com)  
CVR no. 55082715

Distributor in USA:

**GN ReSound North America**

8001 E Bloomington Freeway  
Bloomington, MN 55420  
USA  
1-888-735-4327  
[resound.com](http://resound.com)

Distributor in Canada:

**ReSound Canada**

303 Supertest Road  
Toronto, ON M3J 2M4  
Canada  
1-888-737-6863  
[resound.com](http://resound.com)

**ReSound Government  
Services**

8001 E Bloomington Freeway  
Bloomington, MN 55420  
USA  
1-800-392-9932  
[resound.com/veterans](http://resound.com/veterans)